

Service
Service
Service



Service Manual



CONTENTS

Disassembly diagram5-1

Circuit Diagram - Main board

 Tuner part6-1

 CD part6-2

Layout diagram - Main board

 Component side view6-3

 Copper side view6-4

USB Jack board

 Circuit diagram7-1

 Layout diagram.....7-2

Service parts list8-1..8-3



© Copyright 2009 Philips Consumer Electronics B.V. Eindhoven, The Netherlands
All rights reserved. No part of this publication may be reproduced, stored in a retrieval system or transmitted, in any form or by any means, electronic, mechanical, photocopying, or otherwise without the prior permission of Philips.

Published by LX 0941 Service Audio Subject to modification

3141 785 33811

Version 1.1

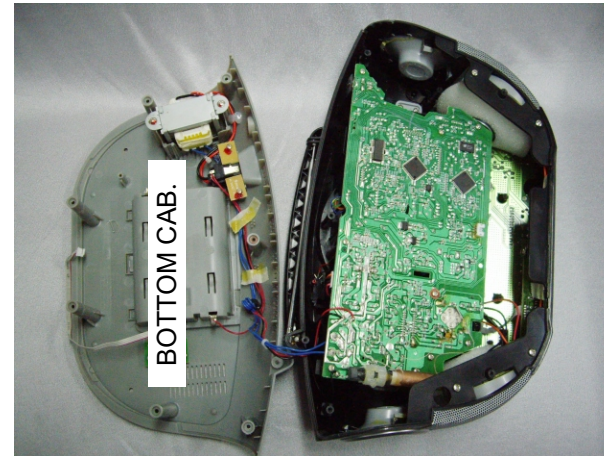
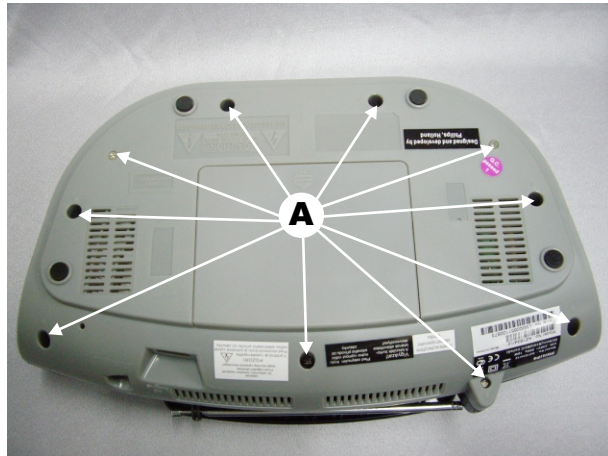


PHILIPS

DISASSEMBLY DIAGRAM

Dismantling of the Bottom Cabinet

1) Remove 10 screws A as indicated to loosen the Bottom Cabinet.

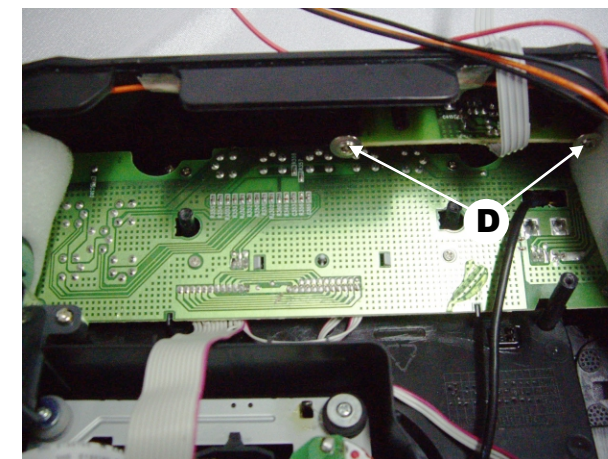
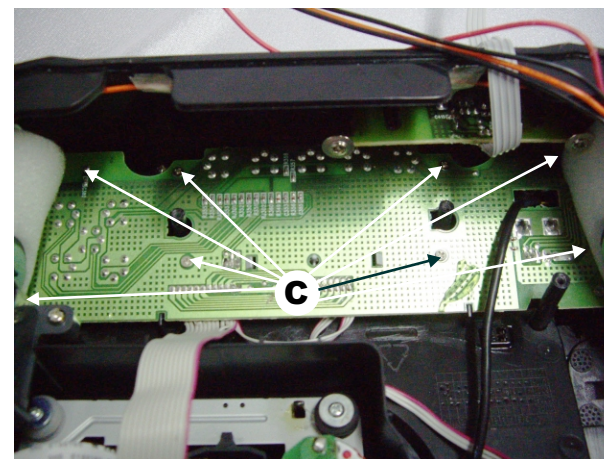
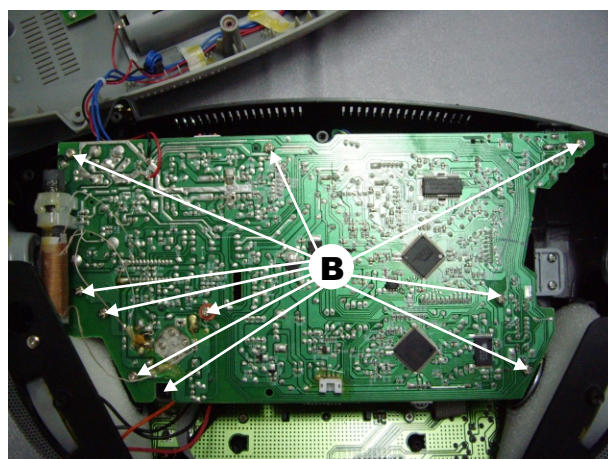


Dismantling of the PCB Board

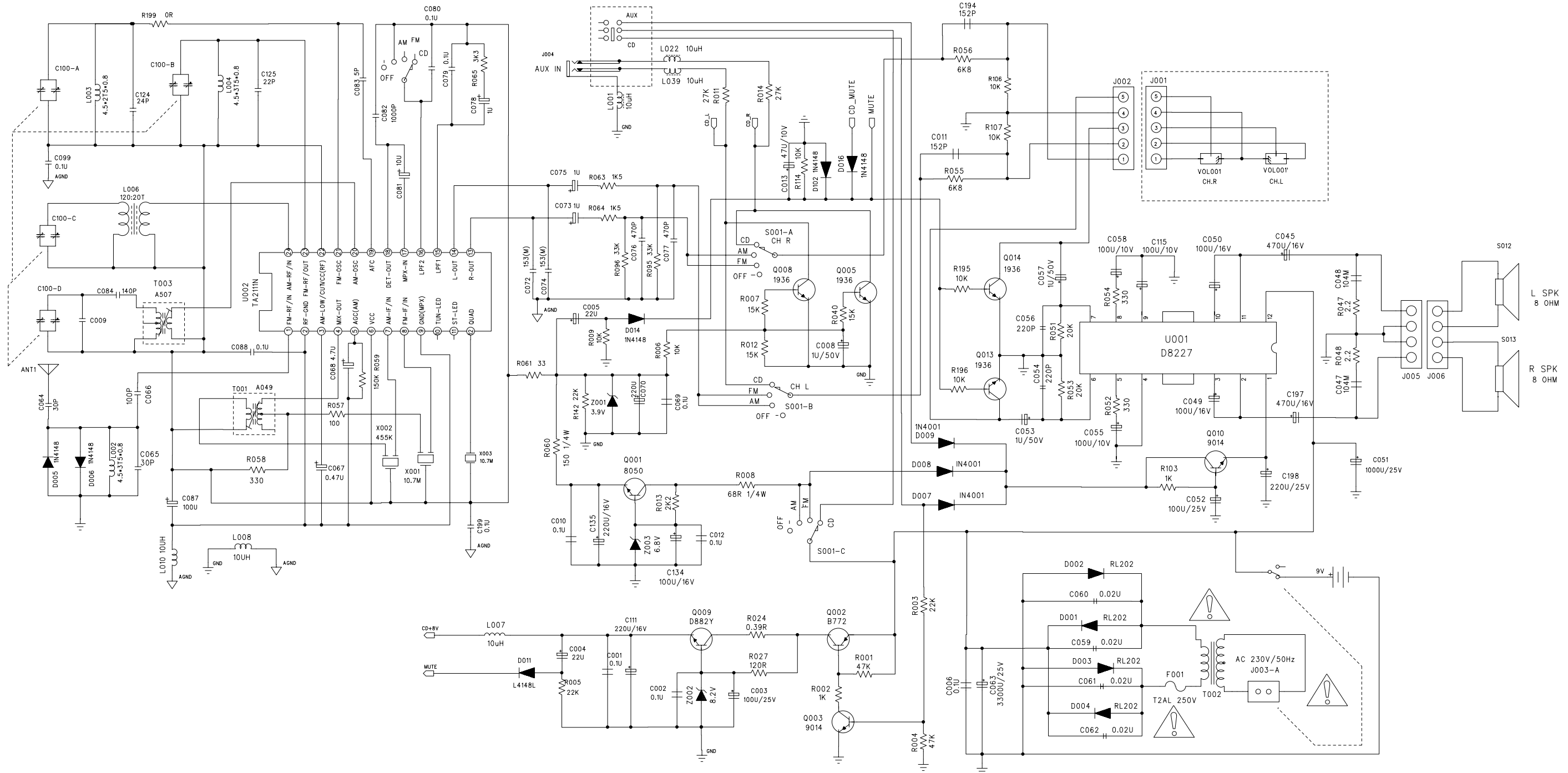
1) Remove 10 screws B as indicated to loosen the Main Board.

2) Remove 8 screws C as indicated to loosen the Key Board.

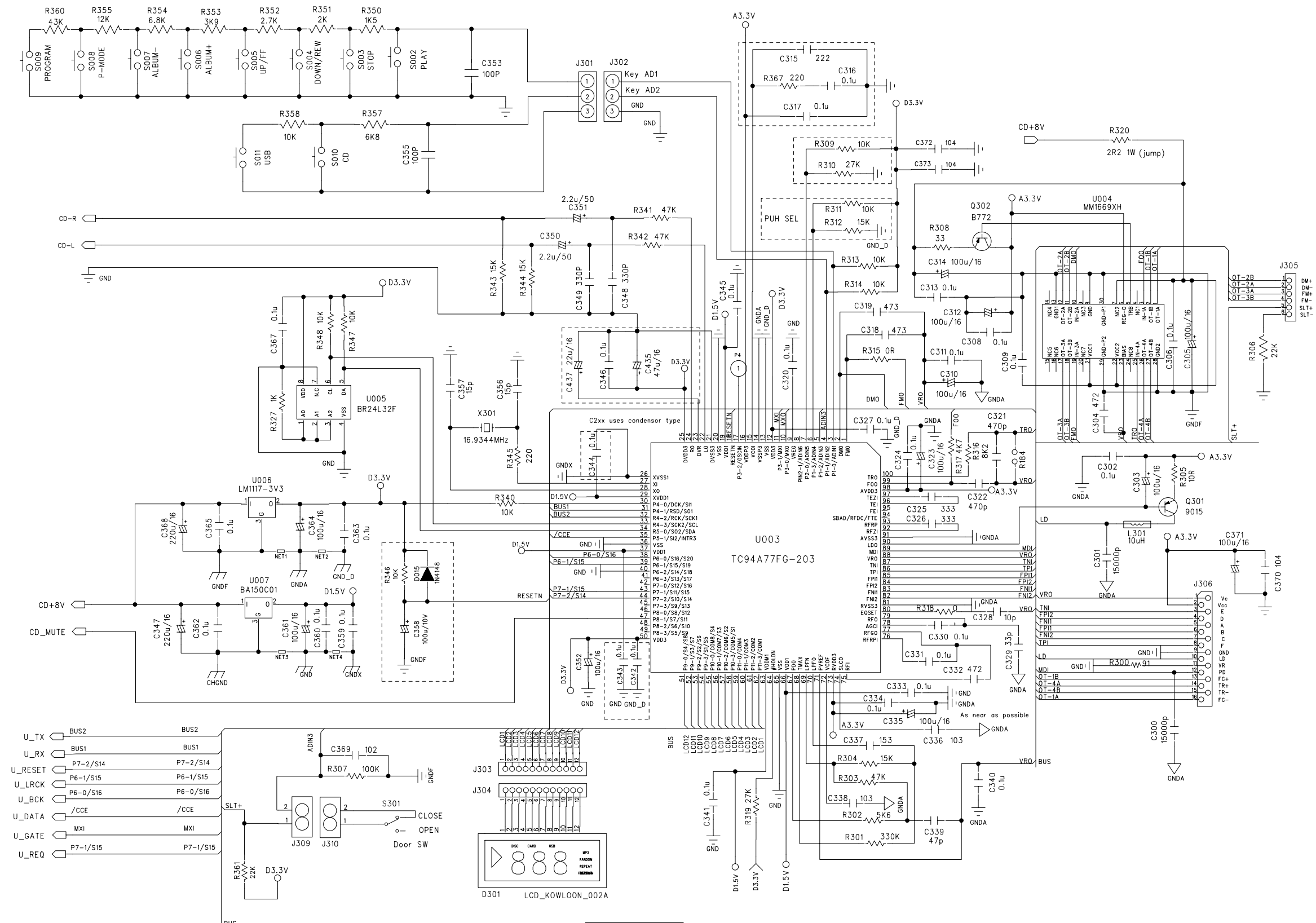
3) Remove 2 screws D as indicated to loosen the USB Jack Board.



**CIRCUIT DIAGRAM - MAIN BOARD
TUNER AND POWER SECTION**



6-2
CIRCUIT DIAGRAM - MAIN / KEY BOARD
CD AND MP3 SECTION



PUH SEL	Pin 6	Volt	R311	R312
Sony KSS-213CL	0V	Open	15k	
Ricohy RB01	1.2V	27k	15k	
Sanyo DA1HF	2V	10k	15k	
Sony KSS-900AAA	3.3V	10k	Open	

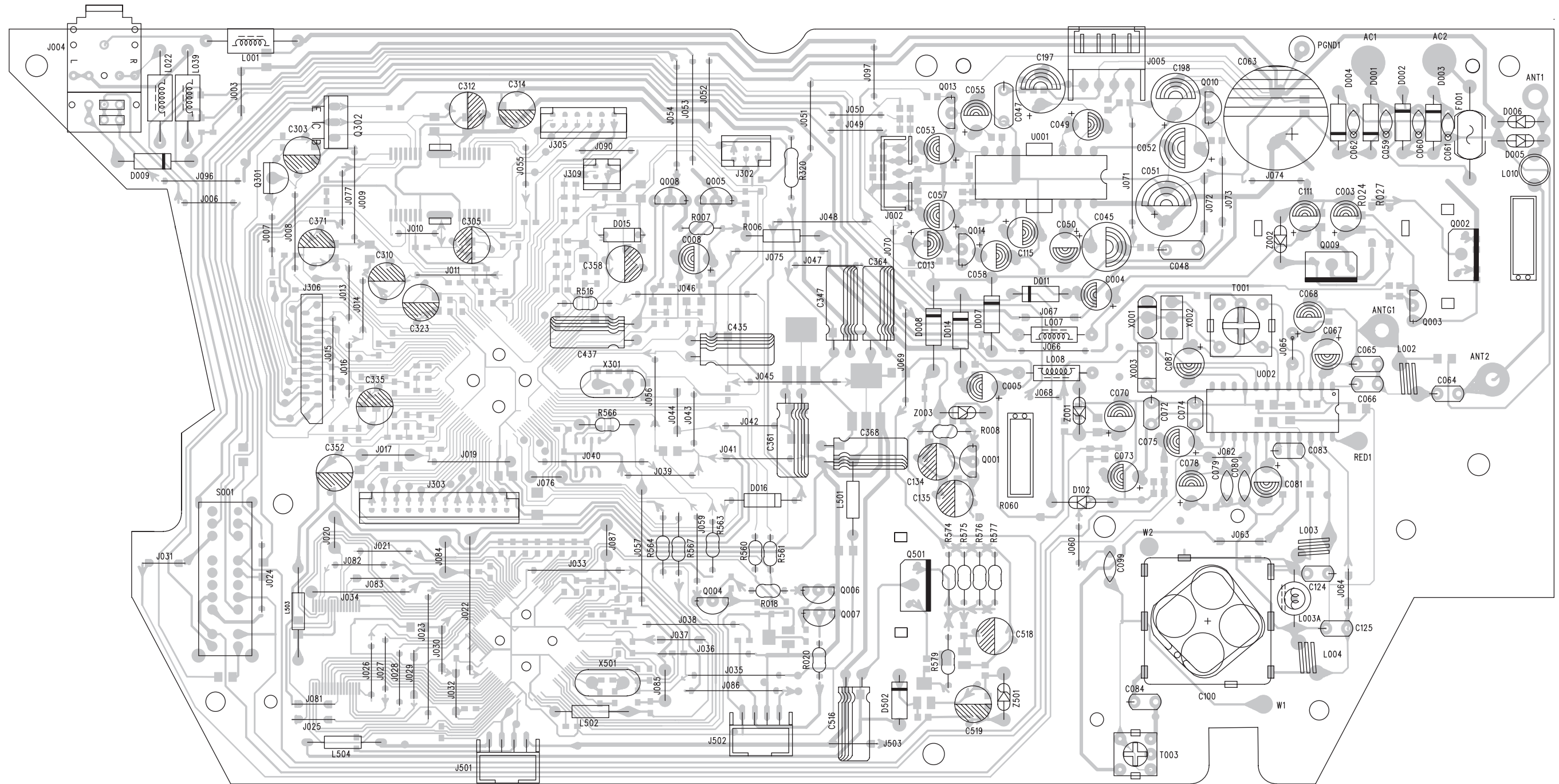
USB Enable	Pin 32	SD Enable	Pin 40
USB Enable	Pull Up	SD Enable	Pull Up
USB Disable	Pull Down	SD Disable	Pull Down

Mode	Pin 7	Volt
Slove	0V	
LED 16k EEPROM	1.35V	
LED 32k EEPROM	1.9V	
LCD 32k EEPROM	2.45V	
LCD 16k EEPROM	3.3V	

LAYOUT DIAGRAM - MAIN BOARD
TOP SIDE

6-3

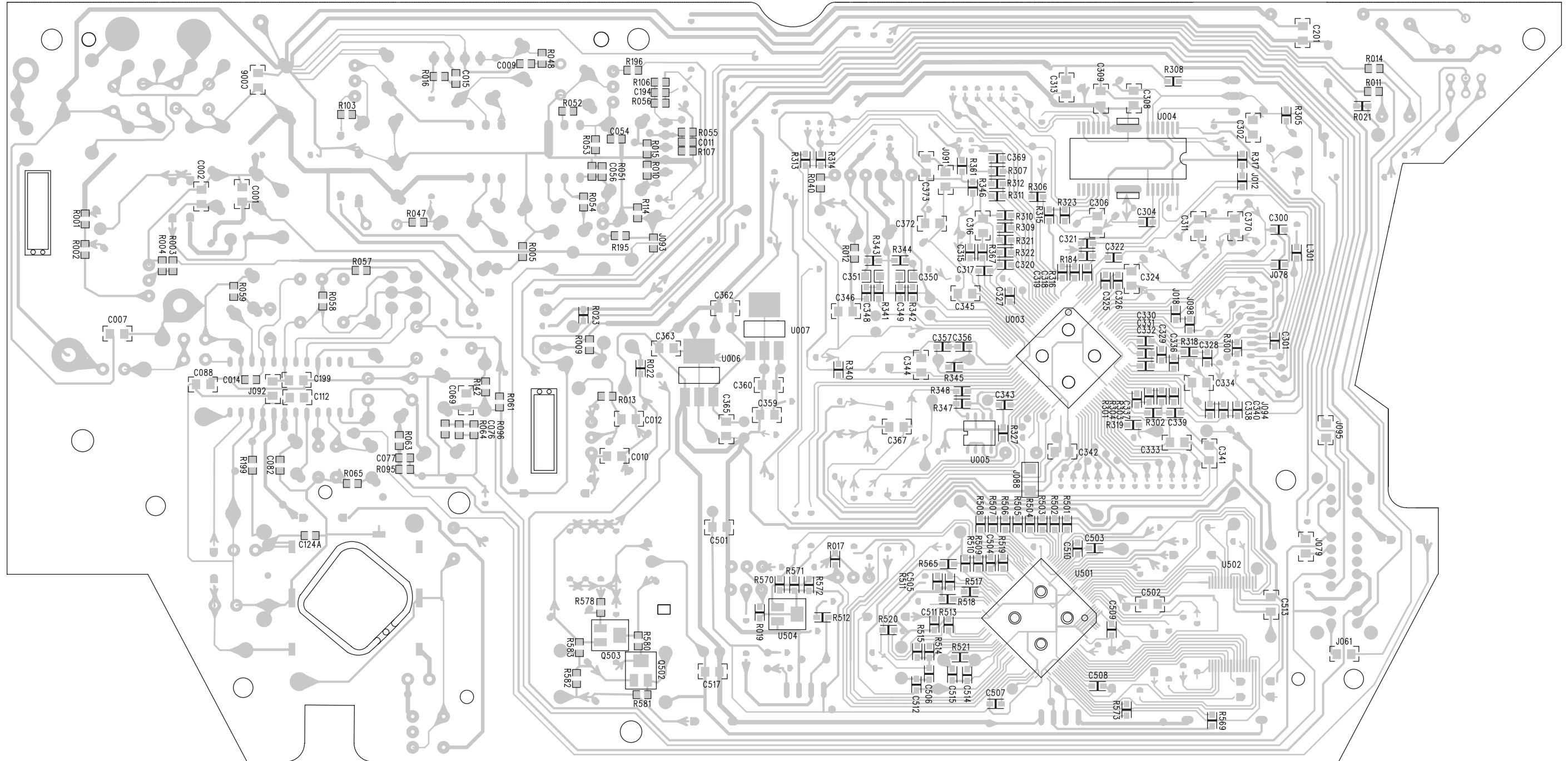
6-3



LAYOUT DIAGRAM - MAIN BOARD
BOTTOM SIDE

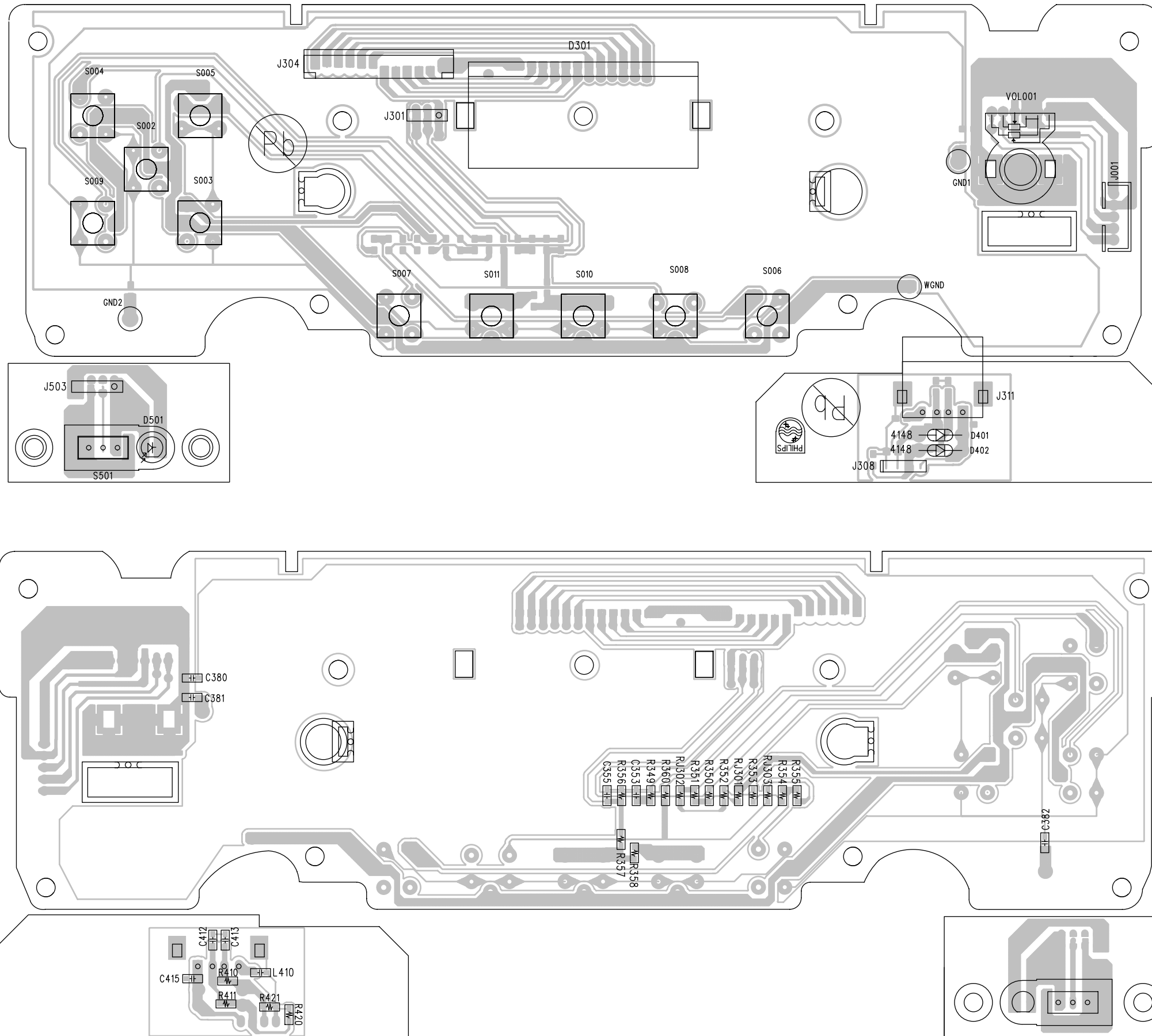
6-4

6-4



7-2
LAYOUT DIAGRAM - KEY/USB JACK / ISD BOARD

7-2



Service parts list(only for-/73/79)

10	994000005084	SPEAKER 3" 2W 8OHM
11	994000005085	CD MECHANISM DA11B3VZ (BALL)
12	994000005087	BATTERY DOOR
13	996510022657	CD DOOR
14	996500039787	LASER COVER (FOR SANYO CD)
15	996510002912	DAMPER GEAR
16	996510002913	DAMPER GEAR HOLDER
17	996510002914	HANDLE FIXER L
18	996510002915	HANDLE FIXER R
19	996510022655	HANDLE
20	996500042091	CD DOOR SPRING
21	994000001687	ROD ANTENNA 158-600MM
22	994000004411	AC CORD SET SAA APP 6FT (-/79)
23	996510002103	CONN. CORD 3.5 ST/PLUGx2 500mm
24	996510039076	AC CORD SET KS APP 6FT (BLK) (-/73)
25	994000003633	AC CORD SET VDE APP 6FT (-/73)
9	996510022656	TRANSFORMER EI48 240V (-/79)
9	996510022967	TRANSFORMER EI48 240V (-/73)

Note: Only these parts mentioned in the list are normal service parts.

MECHANICAL PARTSLIST

0003	996510030002	PCBA-DISPLAY/KEY AZ1833/12
0002	996510030014	PCBA-MAIN AZ1833/12
0080	994000005085	CD MECHANISM DA11B3VZ (BALL)
110	996500039360	RUBBER FOOT(BLK)
116	996510029995	BATTERY PLATE (+)
117	996510029988	BATTERY PLATE (-)
118	996510029998	BATTERY PLATE-A (+ -)
119	996510029996	BATTERY PLATE-B (- +)
124	996500042091	CD DOOR SPRING
171	996510029991	BOTTOM CAB
173	994000005087	BATTERY DOOR
174	996510030003	TUNING BRACKET
175	996510030005	FUNCTION BRACKET
181	994000004392	LASER COVER (FOR SANYO CD)
182	996510029978	SPK COVER L ABS
183	996510030001	SPK COVER R ABS
184	996510002912	DAMPER GEAR
185	996510002913	DAMPER GEAR HOLDER
186	996510029987	TUNING CONIC GEAR
187	996510029982	PVC CONIC GEAR
188	996510002914	HANDLE FIXER L
189	996510002915	HANDLE FIXER R
191	996510030012	PLAY KEY
192	996510030011	STOP KEY
193	996510029985	FUNCTION KNOB
194	996500042092	VOLUME KNOB
195	996510029989	TUNING KNOB
196	996510029983	MP3 KEY
201	996510029994	TOP CAB
202	996510029993	VOL KEY RING ABS
203	996510029986	FRONT PANEL
203	996510029992	CD KEY RING ABS
204	996510024801	AC SOCKET COVER
210	996510030008	BASS FLEX FORT-L
211	996510030013	BASS FLEX PORT-R
215	996510022657	CD DOOR
226	996510022655	HANDLE
230	996510030004	DIAL LENS
231	996510029999	CD DOOR LENS
232	996510030009	DISPLAY LENS
J011	▲ 994000003673	AC SOCKET TC08-115-02
J012	994000001687	ROD ANTENNA 158-600MM
J306	996510002910	16P FLAT FLEX CABLE
S003	994000004376	SWITCH SL14-22AH-5AN
S004	994000005086	DOOR LOCK #DSL-01B
S012	994000005084	SPEAKER 3" 2W 8OHM
S013	994000005084	SPEAKER 3" 2W 8OHM
S301	994000003672	LEAF SWITCH TC-48021-01
T001	▲ 996510030006	TRANSFORMER EI48 127/240V
J010	▲ 994000003633	AC CORD SET VDE APP 6FT
J011	▲ 996510002089	CONN. CORD 3.5 ST/PLUGx2 500mm
J012	▲ 994000001478	AC PLUG ADAPTOR

Note: Only these parts mentioned in the list are normal service parts.

ELECTRICAL PARTSLIST(only for -/55)**MAIN BOARD ASSEMBLY**

C063	996510024798	E.CAP 3300UF 25V +-20% 85C
C100	994000003639	P.V.C 443DF-1DF (A/F)
F001	▲ 994000000585	CERAMIC FUSE W/LEAD 2A/250V
J004	994000004369	PHONE JACK TC38-063-05-0
Q002	994000004145	TRANSISTORS B772Y (160-320)
Q009	996510020216	TRANSISTORS D882F
Q302	994000004145	TRANSISTORS B772Y (160-320)
Q501	994000004145	TRANSISTORS B772Y (160-320)
Q502	996510000337	SMD TRANSISTORS BC847B
Q503	996510006601	SMD TRANSIST BC857B
S001	996510029981	SWITCH SK-44D04-G8
T001	994000003651	I.F.T 10MM A049 (YELLOW)
T003	996510029984	I.F.T 7.6x7.6mm A705 (RED)
U001	994000003636	IC D8227 DIP
U002	994000002694	IC TA2111N AM/FM TUNER
U003	996510009409	IC (TOSHIBA) TC94A77FG-203
U004	996510009408	IC MM1669AH
U005	996510009407	IC BR24L32F-W
U006	994000002839	IC LM1117S-3.3
U007	994000002838	IC BA15BC0FP
U501	996520033295	IC OTI6889 (LQFP-128)
U502	996510018761	FLASH IC SST39VF020
U504	994000002853	IC XC61FC3012MR
X001	994000003642	CER. FILTER LT10.7MA5-A RED
X002	996510030007	CERAMIC FILTER LTPB455A (3PIN)
X003	994000003643	DISC. FILTER JT10.7MG80-A
X301	994000004551	CRYSTAL 16.9344MHZ +-20PPM
X501	996510008326	CRYSTAL 12 MHzHC-49/US H=3.5mm

DISPLAY/KEY BOARD ASSEMBLY

D009	996510029979	LCD DISPLAY SDT-DA1651-RP-1
D501	994000000265	LED LAMP (MICRO)
J311	996510000890	USB SOCKET 4P USB
S002	994000004157	TACT SWITCH 6X6MM H=5MM
S003	994000004157	TACT SWITCH 6X6MM H=5MM
S004	994000004157	TACT SWITCH 6X6MM H=5MM
S005	994000004157	TACT SWITCH 6X6MM H=5MM
S006	994000004157	TACT SWITCH 6X6MM H=5MM
S007	994000004157	TACT SWITCH 6X6MM H=5MM
S008	994000004157	TACT SWITCH 6X6MM H=5MM
S009	994000004157	TACT SWITCH 6X6MM H=5MM
S010	994000004157	TACT SWITCH 6X6MM H=5MM
S011	994000004157	TACT SWITCH 6X6MM H=5MM
S501	996510029977	SWITCH SS-12E03-G2-N
V001	996510029997	ROTARY VOLUME F122KGP A50K

Note: Only these parts mentioned in the list are normal service parts.